

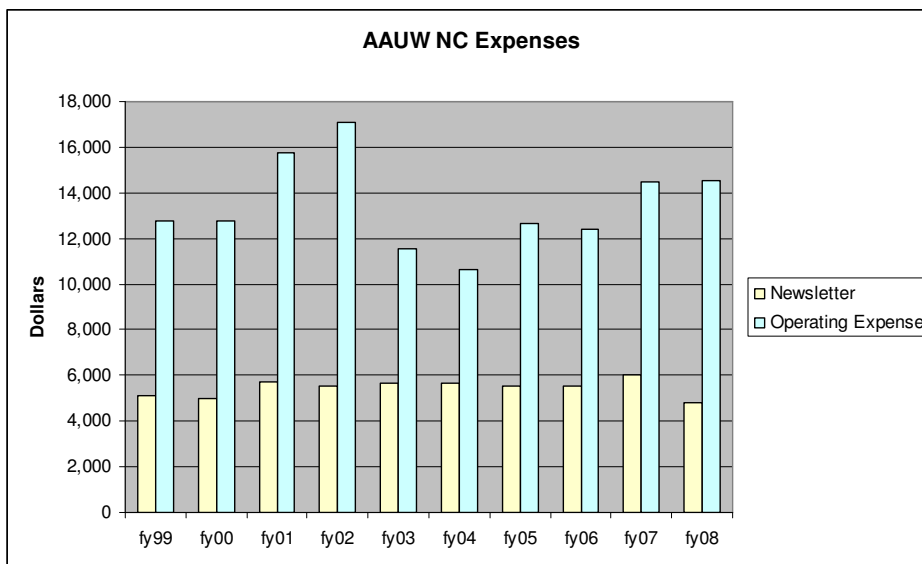
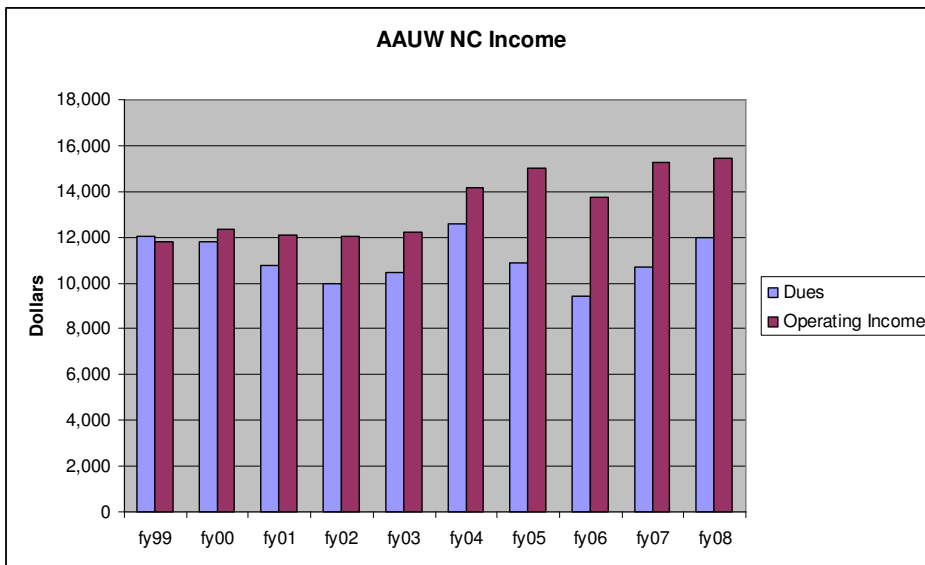
**Notes**

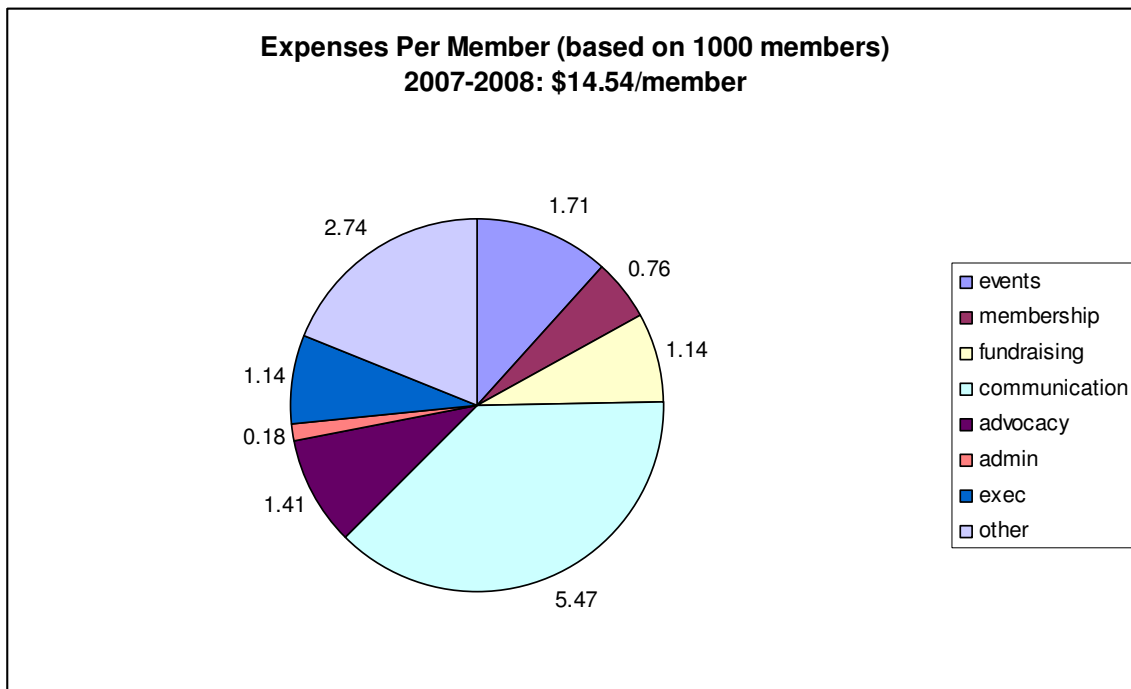
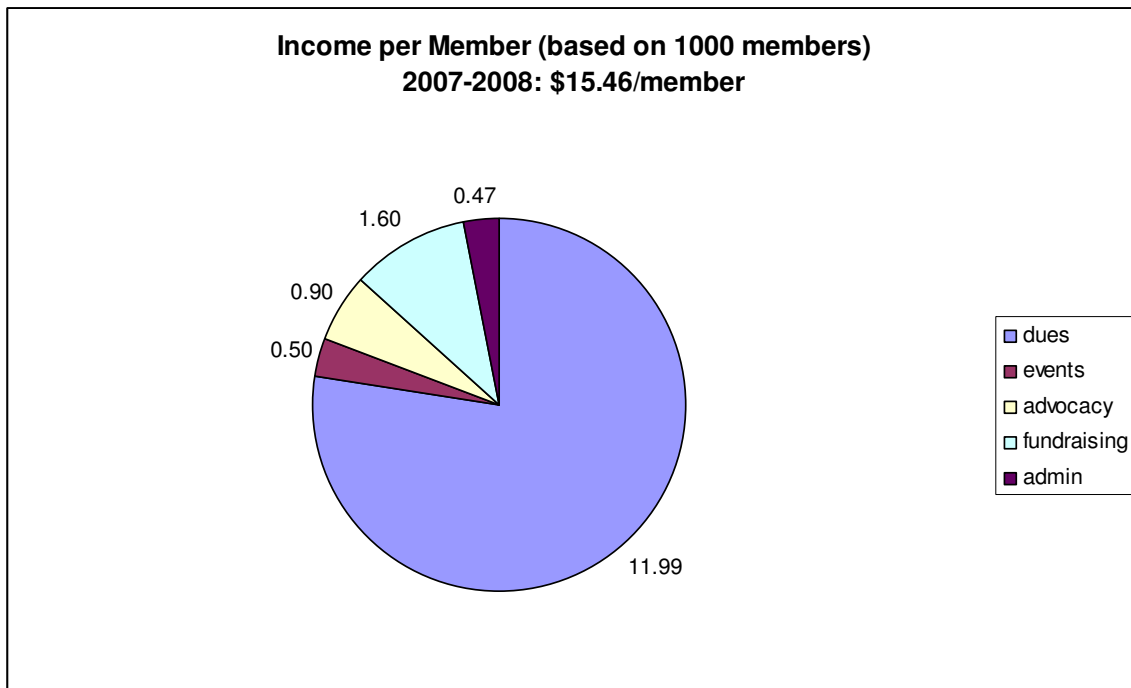
History published FY02  
 Dues raised for FY03  
 100 Club started FY05

There have been inconsistencies in the way dues paid for the following year are handled.

Deposits on future conventions and repayment of the deposits sometimes span fiscal years.

In these charts, income on investments is not included in operating income.





For the Tar Heel News (the bulk of the \$5.47), another way of looking at it gives a per member cost of

\$2 to print and mail your individual four issues

\$2 for the services that serve all members (layout, affixing mailing data, mailing bundles)

\$1 to print the copies for the bundles and print and mail to leaders across the US